

## Subtiter Suite™ User Interface

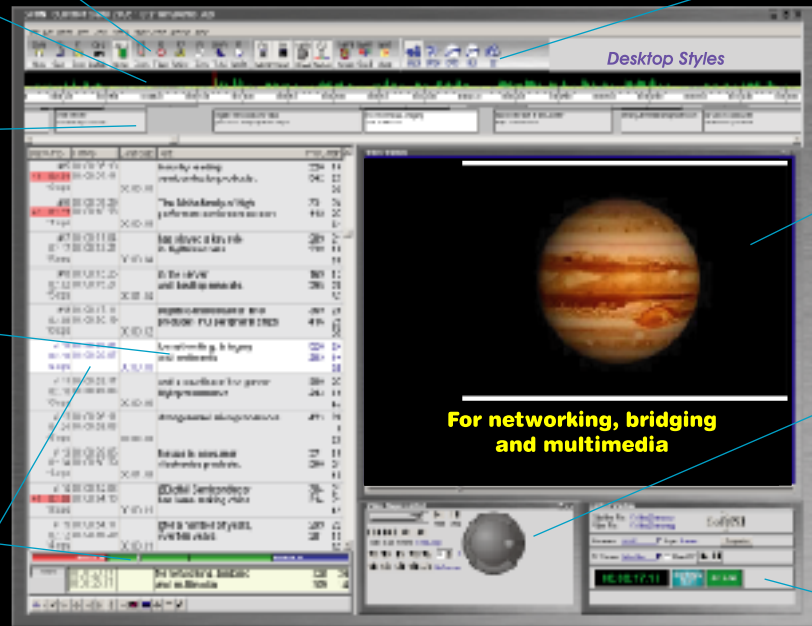
**Customizable Power Bar**

**SoftNI AudioBar™**  
For easy and precise timing and quality control.

**SoftNI BoxTitles™**  
User friendly interactive graphic timeline representation of the times and text of the subtitles.

**SoftNI ITEX**  
Intelligent text editor to create highly readable subtitles in most African, Asian, European and Middle Eastern languages.

**TIM, Times Editor**  
Specialized timing editor to assign time codes complying with SoftNI's ERF (Easy Reading Speed) and POD (Proportional On-screen Duration) criteria.



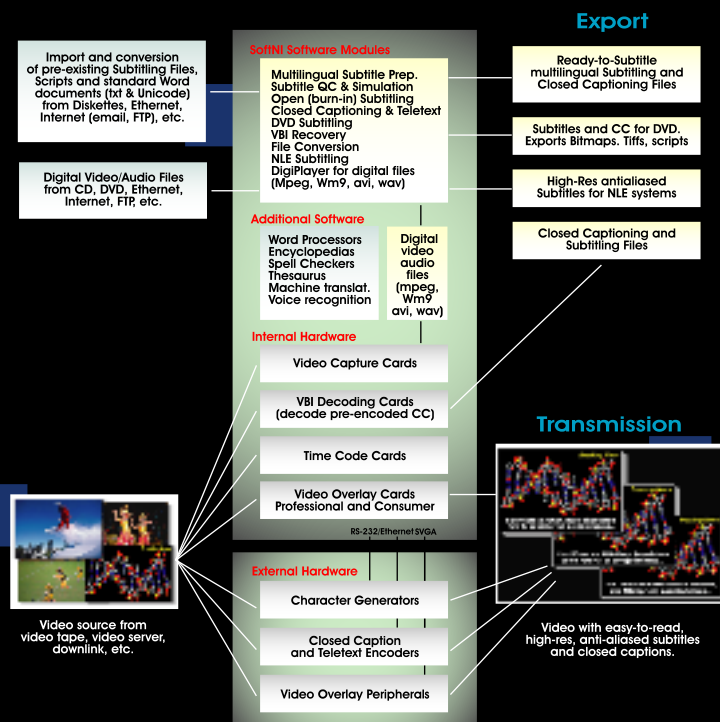
**Subtiter Suite Modules.**  
Modules for Subtitle Preparation, Open Subtitling, Closed Captioning, NLE subtitling, DVD Subtitling, Web Subtitling, Karaoke and New Media.

**Preview Window**  
To see the subtitles overlaid over external (tapes) or internal (mpeg, AVI) video sources. Resizable to full screen for subtitle burn-in.

**SoftNI DigiPlayer™**  
To play digital video and audio files (mpeg, avi, wav). Includes specialized functions for easy subtitle preparation and timing.

**Control & Status Window**  
For subtitle preparation and transmission status and control.

## Subtiter Suite™ Inputs and Outputs



SoftNI

# Subtiter Suite™



**Imagine. A complete subtitling studio in a box.**

- Subtitle Preparation
- DVD Subtitling
- Open Subtitling
- NLE Subtitling
- Closed Captioning
- Multi File Formats

**A revolutionary** all-purpose subtitling solution, SoftNI Subtiter Suite 2003 lets you rapidly create the highest-quality subtitles, in most European, Asian, Middle Eastern and African languages. This powerful, versatile software lets you prepare, format, time, review, export, encode and burn-in subtitles and closed captions, using the leading analog and digital professional video cards, closed caption/Teletext encoders, DVD and NLE systems, character generators, and multilingual cable/satellite transmission systems. All of these capabilities can be performed simultaneously from a single, customizable, scaleable software package.

SoftNI

SoftNI Corporation  
11400 West Olympic Boulevard- Second Floor  
Los Angeles, CA 90064 USA

Tel: 310/312-9558 Fax: 310/312-9557  
Email: info@softni.com  
Web: http://www.softni.com

# SoftNI Subtitler Suite™ 2003

## Key Advantages

**Top Quality Subtitles.** Create subtitles that comply with SoftNI's research-based subtitling standards- ERF (Easy Reading Factor), POD (Proportional On-Screen Duration), and TRS (True Reading Speed)- to ensure highest quality.

**Software-based.** Uses minimum hardware for stable, problem-free operation. Economical, easy to upgrade, very simple system setup.

**Open-architecture.** Compatible with the most popular off-the-shelf hardware, software and standards, including Windows 2000/XP and standard Word txt and Unicode files.

**Multi-purpose.** Supports subtitle preparation for open subtitling, closed captioning (encoding and decoding), DVD and NLE subtitling, and all types of media and digital video transmission systems.

**Modular.** Equip your facility with only the functionality you currently need, then upgrade without penalty at any time to any other configuration.

## Core Engine

The Subtitler Suite's™ Core Engine lets you open and read Subtitling Files and completely evaluate their quality, based on SoftNI's standards for subtitle design, frame-accuracy, readability, and viewer understanding. Subtitles are displayed in a resizable preview window on the computer monitor, where all subtitle style elements (colors, borders, sizes, locations, alignment, italics, and other variables) can be customized, using any Windows TrueType™ font. With off-the-shelf video cards and video capture devices, you can preview the subtitles overlaid onto external video and also output the video with burnt-in subtitles, tape-to-tape.

## Subtitle Preparation Modules

SoftNI Subtitle Preparation modules equip your Subtitler Suite™ to easily create, edit, time and quality-check multipurpose, top-quality subtitling files of all kinds, for open subtitling, closed captioning/ Teletext, DVD and NLE systems, and multilingual cable/satellite transmission systems. All of our Preparation modules incorporate many unique, innovative features to help you maximize both quality and productivity.

### ITEX. Intelligent Text Editor.

ITEX is a specialized text editor that lets you rapidly edit and format subtitle text. To ensure your subtitles are of the highest quality, it provides automatic feedback about how well they perform against SoftNI's grammatical and metric compliance rules. These rules apply a wide range of research-based, user-controllable parameters to let you determine the readability of the subtitles, and control factors that determine both comprehension, and the viewer's satisfaction with the subtitled program. ITEX integrates seamlessly with Microsoft Word, including Thesaurus and Spell Checker, as well as with other word processors. Subtitling files can be saved in standard text or Unicode formats.

### TIM. TimesEditor.

TIM is a multifunction timing editor that lets you assign subtitle in-out times with frame accuracy based on SoftNI's timing standards: Proportional On-screen Duration™ and True Reading Speed™. These establish a suitable reading speed for viewers, to ensure their understanding and satisfaction. Users are able to assign time codes in numerous ways: type-in, +/-, or easy cueing from the keyboard; or external devices such as TimeBlaster™, ShuttlePro™ and joystick. Time codes can be captured readily from an external source, from digital video files, and even from the computer's clock.

### BOX. BoxTitles™\*

BOX is a unique, interactive, graphic representation of the subtitle sequence for easy timing and quality control. The

subtitles appear as blocks (BoxTitles™) on a scaleable timeline display. The horizontal position (spotting) and the length of the blocks (subtitle duration) can be changed interactively, giving you an exceptionally intuitive, precise, visual timing capability. Eliminate typing or keystrokes to assign or fix time codes!

### DIP. DigiPlayer™\*

DIP is a specialized digital media player that lets you overlay and synchronize subtitles with MPEG, WM9, AVI, MIDI and other digital files. It provides a familiar edit-deck control panel, complete with jog-shuttle knob. Frame-by-frame control, loops, jumps, auto-rewinds and other settings, let translators and transcribers very rapidly preview dialog segments and select optimal in/out points. With the addition of an off-the-shelf video overlay card, the video with subtitles can be recorded on tape for client approval and quality control.

### ABA. AudioBar™\*

ABA is a graphic timeline representation of the audio waveform. By presenting a visible, continuous audio-level display, it lets you determine in/out points with exceptional speed and precision. By letting you see the exact frame where a speaker begins or ends, it eliminates time-consuming back-and-forth searching.

### DEN. DigiEncoder™.

DEN lets you encode video with timing information into MPEG and WM9 files. It also provides enhanced security, with watermark and encryption.

### KAR. Karaoke.

KAR lets you create and display subtitles in karaoke style for karaoke videos, language instruction, and dubbing scripts.

## Language Modules

### UNI. Multi-Language Unicode Module.

UNI provides the ability to work with most languages supported by Windows 2000/XP using virtually any TrueType font. It imports and saves Word txt and Unicode files.

### NOXP. NonWindows XP Language Module.

NWL lets you work with languages not supported by Windows XP. Ask for language availability.

## File Format Modules

### MUFI. MultiConverter

MUFI is a powerful application that converts existing text files, subtitling/captioning files, and scripts, from a multitude of widely used file formats, to SoftNI subtitling files in standard ASCII/ANSI text and Unicode formats. It also allows conversions from/to EBU-standard open and Teletext ".stl" files. This lets Subtitler Suite™ serve as a subtitling "hub" in a multi-format facility, that allows you to use existing subtitling files and receive new files created with other subtitling systems.

## Advanced Media Modules

SoftNI Advanced Media subtitling modules equip your Subtitler Suite™ to export top-quality text and graphic (bitmap, tiff, etc.) subtitles into the most widely used new media.

### DVDTitler™

DVDTitler™ lets you export top-quality subtitles to the most popular DVD authoring systems. The subtitles can be exported as DVD-compatible text files, graphic files (bitmap, tiff) with timing scripts, or DVD closed-captioning files.

### NLETitler™\*

The NLETitler™ module lets your Subtitler Suite™ export top-quality anti-aliased graphic (bitmap, tiff) subtitles compatible with the most popular NLE systems for Windows and Macintosh. It lets you import and position the subtitles with frame accuracy on the NLE's timeline.

### ITVtitler™

The ITVtitler™ module lets your Subtitler Suite™ output high quality graphic subtitles for Ultech's DV2000, and ITVinjector™ digital character generator.

## Open Subtitling Modules

SoftNI's open subtitling modules interface your Subtitler Suite™ to world-class broadcast character generators (Chyron Infnit! family, Chyron Codi and PC-Codi) and broadcast-quality video cards (Leitch DPS, Matrox, and others) allowing you to key top-quality, highly readable, anti-aliased subtitles onto analog or digital (SDI) broadcast quality video. They provide the finest on-screen look currently possible. With additional software, the Subtitler Suite system can also be used as a platform for video capture, character generation, special effects and many other post-production and multimedia applications.

### S-MADI. Matrox DigiSuite™ Subtitler™

Open Subtitling module compatible with Matrox DigiSuite™ family of broadcast professional video cards. Also supports DigiMix.

### S-DPS. Leitch dpsReality™ Subtitler™

Open Subtitling module compatible with the Leitch dpsReality broadcast professional video card.

### S-COD. Chyron Digital CODI™ Subtitler™

Open Subtitling module compatible with Chyron Digital PC-CODI broadcast character generator. SoftNI developed and released the first computerized subtitling system in 1986 using Chyron VP-1 CG.

### S-INF! Chyron Infnit!™ Subtitler™

Open Subtitling module compatible with the Chyron Infnit! family of broadcast character generators.

## Closed Captioning Modules

SoftNI Closed Captioning modules let you equip your Subtitler Suite™ system to encode and decode closed captions, XDS packets, and other data from the VBI (vertical blanking interval).

### CC-ENC. Closed Caption MultiEncoder™

Encodes US closed captions, using the best analog and digital closed caption encoders (EEG, Evertz, Link, Norpak, Microvideo, Ultech, and others). The CC-ENC module can simultaneously encode one or two languages into line 21 of the VBI.

### CC-DEC. Closed Caption Decoder™

Recovers closed captions from the VBI and displays them as high quality, easy-to-read subtitles, using analog or digital character generators and broadcast quality professional video cards. This lets you take advantage of all of the features of open subtitling, such as high resolution, proportional TrueType fonts, colors, borders, backgrounds and other graphic elements, providing captions that are much easier to read and more pleasing to the viewers.

### CC-RET. Closed Caption Retriever™

Recovers standard closed captions (EIA-608) from a video program and saves them into standard computer files (Word, ASCII/ ANSI). These files can then be used for other subtitling processes, such as further editing, formatting, styling and translation. CC-RET can assign time codes to the recovered closed captions based on the computer's clock, or by reading time code from an external video source.

*\* SoftNI has originated many of the most important subtitling innovations. We developed and introduced the first subtitling products for DVD subtitling (NAB 1997); the first graphic timeline, specialized video player for digital files, and graphic audio wave display for subtitling systems (NAB 1998); and the first subtitling system to export to NLE's (NAB 2000).*

*Our intensive development efforts have kept these products at the forefront.*

